

CALIBER[®] Power-Clamp

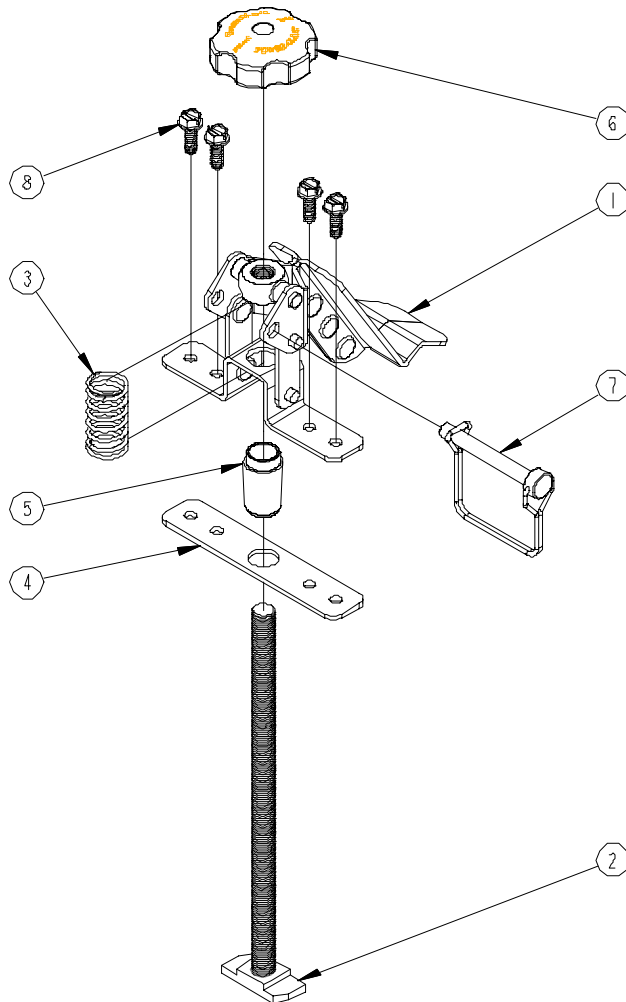
Mounting Instructions for: Part No. 16306 & 16307

TOOLS REQUIRED:

Power drill
7/32" Drill bit
3/8" Socket wrench

HARDWARE INCLUDED:

Item	Qty	Description
1	1	Clamp linkage
2	1	Lockdown rod
3	1	Spring
4	1	Plate
5	1	Bushing
6	1	Knob
7	1	Lynch pin
8	4	Screw



SCALE · 0.420 TYPE · ASSEM NAME · PM16306 SIZE · A

The CALIBER Power-Clamp part #16306 is designed to fit a Floe trailer which comes with their factory installed channel tie down system and part #16307 is designed to fit a Triton trailer which comes with their factory installed channel tie down system. Part #16306 is shown in the illustration.

- Step 1:** Place the plate (item 4) on the topside of your tie down bar, aligning the large hole in the plate with the hole in the center of the tie down bar. The longest side of the plate should be parallel to the length of the bar, so the four smaller holes in the plate are located on the tie down bar.
- Step 2:** Mark the location of the four small holes from the plate (item 4) onto your tie down bar. Drill with a 7/32" bit through the topside only, at the four marks.

CALIBER[®]

952-985-9999

www.caliberproductsinc.com

CI5024

- Step 3:** **Refer to Illustration:** Insert the lockdown rod (item 2) through from the bottom side of your tie down bar. Place the plate (item 4) and the bushing (item 5) through the lockdown rod onto the topside of the bar. Insert the spring (item 3) into the clamp linkage (item 1) and thread the clamp linkage onto the lockdown rod until the rod is through the top of the clamp a couple of inches.
- Step 4:** Thread the knob (item 6) onto the rod sticking out of the top of the clamp linkage. The knob will be securely tightened in a later step.
- Step 5:** Line up the four holes drilled in your tie down bar with the four holes in the plate (item 4) and the four holes in the clamp linkage (item 1). Insert the self-tapping screws (item 8) with the 3/8" wrench and tighten the clamp down to your bar.
- Step 6:** With the snowmobile on your trailer in the desired position, place the tie down bar on top of your skis. With one hand lift up on the Power-Clamp handle. With the other hand push down on the knob and give a ¼ turn clockwise to insert the rectangle end of the lockdown rod into the channel. Push down on the handle to clamp the snowmobile to the trailer.
- Step 7:** **To adjust clamping pressure:** With the clamp detached from your trailer, turn the knob clockwise for less pressure and turn the knob counterclockwise for more pressure. Then try again to clamp your snowmobile to the trailer. Repeat this step until a desired pressure is achieved.
- Step 8:** With the snowmobile clamped down, remove the knob, add a drop of loctite and reassemble the knob. **HELPFUL HINT:** If the knob interferes with the bottom of your snowmobile, you can shorten the lockdown rod. Remove the knob and cut the rod to a desired length, then reassemble the knob. By leaving the rod at its full length you are able to adjust for multiple ski heights.
- Step 9:** With your snowmobile clamped to the trailer, assemble the lynch pin (item 7) through the clamp. A paddle lock can be used instead of the lynch pin. **WARNING:** A lynch pin or a paddle lock must be used while transporting your snowmobile on the trailer using the Power-Clamp.

WARNING: Snowmobile may require additional tie down support to provide safe transport. **CALIBER®** is not liable for damage or injury caused by improper mounting or use of the Power-Clamp.

LIFETIME LIMITED WARRANTY

CALIBER® warrants this product to be free from defects in material and workmanship, and may elect to repair or replace this product. This warranty does not cover any labor costs to remove or reinstall this product. To inquire on the warranty of this product, please contact **CALIBER®**.