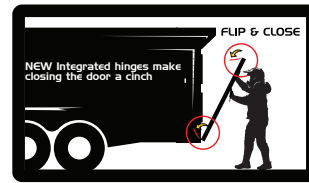
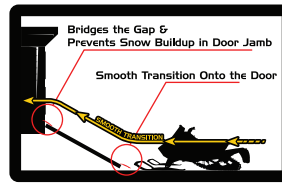
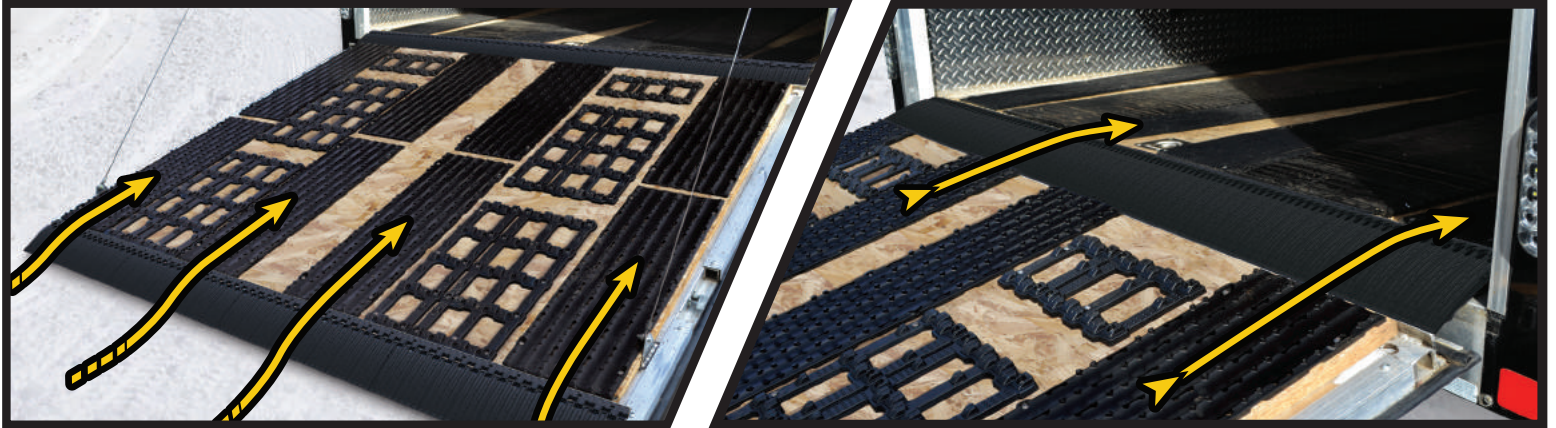




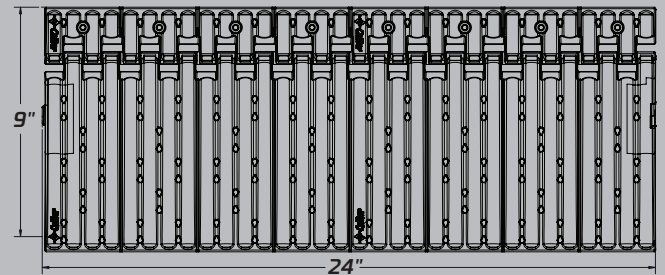
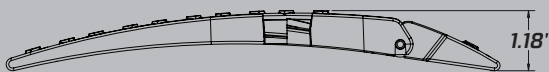
NEW PRODUCT RELEASE



LOADING MADE EASIER!



**PRODUCT DIMENSIONS:**  
 2pc (48"), 3pc (72") or 4pc (96")  
 INCLUDES: Instructions and stainless steel hardware



**EDGE GLIDES FOR EFFORTLESS LOADING OF YOUR SNOWMOBILES**

- **NEW** increased size allowing for more versatility
- **NEW** integrated traction knobs to provide grip for tires and foot traffic
- **NEW** integrated cut lines to provide clear edges when trimming to fit
- **NEW** hinge & pin design eliminates stainless hinge to reduce assembly time
- Innovative Edge Glide provides smooth Edge transition from the ground to your trailer or ramp
- Incorporates Caliber's proven friction-reducing glide technology
- High-impact plastic (HDPE), guaranteed not to crack, chip, break or wear out
- Stainless steel screws; installs with ease



MADE IN USA / PATENT PENDING / LIFETIME WARRANTY

Part # **13390**  
 Part # **13391**  
 Part # **13392**

Edge Glide 2.0 2pc (48")  
 Edge Glide 2.0 3pc (72")  
 Edge Glide 2.0 4pc (96")

SRP: **\$49.95**  
 SRP: **\$69.95**  
 SRP: **\$89.95**